

# Saramonic

2.4 GHz Dual-Channel Wireless  
Microphone System

2.4 GHz 双通道无线麦克风系统

**Saramonic Mix**

User Manual  
用户手册

## Statement

Please read this manual carefully before using it, and strictly operate and store it in accordance with the instructions. Please save the manual for future reference. If you need further assistance than the user manual, please consult your retailer for help or email us at: [support@saramonic.com](mailto:support@saramonic.com)

## Cautions

1. Non-professionals are strictly prohibited from disassembling this unit on their own.
2. Please keep it away from heat sources such as radiators or spotlights.
3. Do not remove the battery without professionals' help.
4. Please clean the unit with only a soft, dry cloth.
5. When using and storing, please keep away from dust and moisture.
6. For the best pick-up pattern, do not hold your hand against the microphone capsule cover.

## General Introduction

The Saramonic Mix, a 2.4 GHz dual-channel wireless microphone system, comes with two transmitters and a receiver. The transmitter is packed full of powerful features such as mute, noise reduction, and automatic connection. It also features independent volume control buttons for input level adjustment. Additionally, the transmitter can quickly start smartphone recording\*, making the recording process more effortless and efficient. The receiver boasts mono and stereo output modes, and allows users to play audio directly without unplugging the receiver, providing greater flexibility and efficiency. The receiver supports simultaneously charging both the mobile device and the receiver during recording. Furthermore, users can monitor audio quality in real time through the receiver's monitor port.

The Saramonic Mix supports USB-C, Lightning, and 3.5 mm TRS output, making it compatible with mainstream smartphones and various cameras. The system ensures stable audio signal transmission within 400 meters thanks to its advanced wireless transmission technology, allowing for more creative freedom. Whether for professional recording or daily creative content, the Saramonic Mix is an indispensable audio solution.

\*Smartphones where the volume button can be used to take a photo or start and stop a video are applicable.

## Features

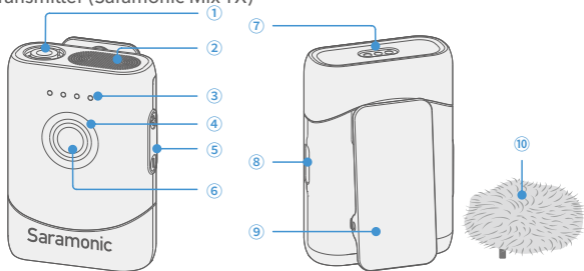
- Mic In, Pro Up
- AFH, Anti-interference
- 7.0 ms Ultra-Low Latency
- AES 128-bit Secure Transmission
- AGC & Limiter, Balanced Sounds, Clipping Free
- Dual Monitoring, Real-Time & PlayBack

## In the Box

- Saramonic Mix TX Transmitter × 2
- Saramonic Mix RX Receiver × 1
- Saramonic Mix CC Charging Case × 1
- Mobile Device Adapter (USB-C) × 1
- Mobile Device Adapter (Lightning) × 1
- Receiver Belt Clip × 1
- Magnet × 2
- 3.5 mm TRS to TRS Camera Cable × 1
- USB-C to USB-A Charging Cable × 1
- Fur Windshield × 2
- Carrying Bag × 1

## Product Structure

### Transmitter (Saramonic Mix TX)



**① Fur Windshield Socket / 3.5 mm TRS Input**

Install the included fur windshield here when recording in a windy environment. It also functions as a 3.5 mm TRS input to connect a lavalier microphone (not included).

**② Built-in Microphone**

For audio input.

**③ Volume Indicators**

The four indicator lights correspond to volume levels 1 to 4, with one indicator representing each level. A short press of the + or - button will light up the volume indicators, showing the current volume level.

**④ Status Indicator**

Indicates the transmitter status.

Status	Indicator
Unpaired with the receiver	Blinks blue slowly
Paired with the receiver	Solid blue
Press the transmitter's power button once to start the mobile device to record	Blinks blue 3 times quickly
The microphone mute function is activated by double pressing the transmitter's power button	Blinks red slowly

Noise cancellation is enabled by pressing the receiver's NC button once	Solid green
Press and hold the receiver's NC button for 12 seconds to restore	Blinks red slowly for 5 seconds (then the transmitter shuts down)
Low battery	Blinks red quickly
Charging	Solid red
Fully charged in startup state	Lighting effect returns to original working state
Fully charged in shutdown state	Solid blue

Note: When it is turned on and not paired with the receiver, the transmitter will automatically shut down after 10 minutes.

#### ⑤ Volume + / - Button

A short press of the + or - button will light up the volume indicators, showing the current volume level. Press the + or - button again to adjust the microphone gain, ranging from level 1 to 4, and the volume indicators will display the adjusted volume. If the volume is still low, you can adjust the RX output volume via the APP.

#### ⑥ Power Button

- Press and hold it for 2 seconds to power on or off the transmitter.
- When the receiver is connected to a mobile device, and the device is on the video shooting page, press the transmitter's power button once to start or stop recording. Note that only mobile devices where the volume button can be used to take a photo or start and stop a video are supported.
- Double press this button to mute or unmute the transmitter's microphone.

#### ⑦ Charging Contacts

Charging will begin when the charging contacts of the transmitter connect to the charging contacts of the charging case. When the transmitter is fully charged, its status indicator will turn solid blue and automatically turn off after 60 seconds.

#### ⑧ USB-C Data Port

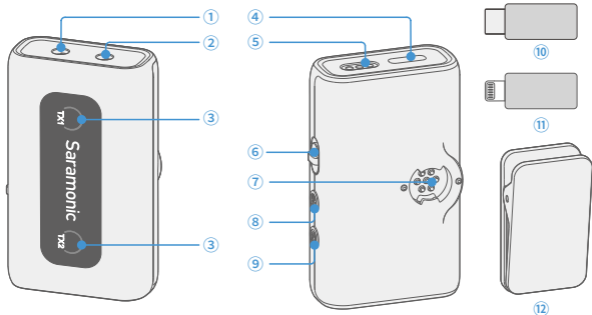
For connecting to a computer for upgrades. This port can also be used to charge the transmitter.

#### ⑨ Belt Clip

Attach the transmitter to clothing using the belt clip or using with the included magnet.

#### ⑩ Fur Windshield

## Receiver (Saramonic Mix RX)



### ① Monitor Port

Plug in your headphones to monitor the transmitter audio quality.

### ② 3.5 mm TRS Output

For connecting the provided camera cable to output audio from the transmitter to a camera or mixer.

### ③ TX1 & TX2 Indicator

Corresponds to the status of transmitter 1 and transmitter 2. The two indicators also indicate the receiver status.

Note: When it is turned on and not paired with the transmitter, the receiver will automatically shut down after 10 minutes.

Status	TX1 & TX2 Indicator
Unpaired with the transmitter	Blinks blue slowly
Paired with the transmitter	Solid blue
The microphone mute function is activated by double pressing the transmitter's power button	Blinks red slowly
Noise cancellation is enabled by pressing the receiver's NC button once	Solid green
Mobile device's speaker is enabled by double pressing the receiver's power button	Blinks blue 3 times quickly

Press and hold the receiver's NC button for 12 seconds to restore	Blinks red slowly for 5 seconds (then the receiver shuts down)
Low battery	Blinks red quickly
Charging	Solid red
Fully charged in startup state	Lighting effect returns to original working state
Fully charged in shutdown state	Solid blue

#### ④ USB-C Data Port

For connecting to a computer for upgrades. This port can also be used to charge the receiver. When the receiver is connected to a mobile phone, this port can connect to a charging cable to simultaneously charge both the phone and receiver.

#### ⑤ Charging Contacts

Charging will begin when the charging contacts of the receiver connect to the charging contacts of the charging case. Once fully charged, the receiver's TX1 indicator will turn solid blue and automatically turn off after 60 seconds.

#### ⑥ M / S Mode Switching Button

The receiver supports two output modes: mono and stereo. You can switch between them by sliding the M / S mode switching button. Slide to M for mono mode and slide to S for stereo mode. Note that when the safety track is enabled in the APP, the output mode will default to mono.

#### ⑦ Expansion Port

The receiver can be connected to a mobile device using the included mobile device adapter. The receiver can also be mounted onto to a camera when the receiver belt clip is installed here.

#### ⑧ NC Button

- Press it once to activate or deactivate noise cancellation. There are two levels: strong and weak. The default setting is strong noise cancellation, which can be adjusted in the APP. For indoor use, it is recommended to use the weak noise cancellation.
- After the transmitter and receiver are successfully paired, press and hold the NC button for 12 seconds. The receiver's indicator will blink red slowly for 5 seconds before automatically turning off, and the transmitter and receiver will restore their default settings.

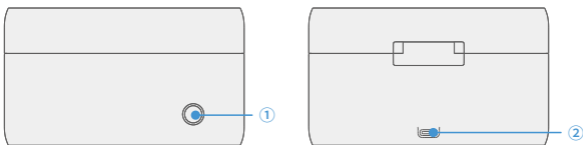
Note: restoring to default settings will only reset the function settings and will not affect the pairing.

#### ⑨ Power Button

- Press and hold for 2 seconds to power on or off.
- Double press the power button to enable or disable the mobile device's speaker function. This function is enabled by default. When the receiver is connected to your mobile device, you can play back your recordings directly without the need to unplug.

- ⑩ **Mobile Device Adapter (USB-C)**  
For connecting a mobile device with a USB-C port.
- ⑪ **Mobile Device Adapter (Lightning)**  
For connecting a mobile device with a Lightning port.
- ⑫ **Receiver Belt Clip**  
For mounting the receiver onto a camera.

## Charging Case (Saramonic Mix CC)



### ① Battery Level Indicator

- When the charging case is connected to power for charging, this indicator will blink white slowly, and turn solid white when fully charged.
- If the charging case is not during charging, this indicator will display the case's current battery level when it is opened or the transmitters and receiver are placed into it for charging. The indicator goes off after 10 seconds.

Battery level (case)	Indicator
< 20%	Blinks red quickly
20%-50%	Solid red
50%-75%	Solid orange
75%-100%	Solid white

Note: Please charge the charging case once its battery level indicator flashes red quickly.

### ② USB-C Charging Port

For charging the charging case itself via the included charging cable.



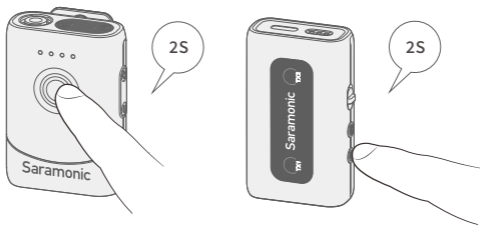
# Operation Guide

## Powering On / Off

- Automatic: The transmitters and receiver automatically power on when removed from the charging case; they automatically power off when placed back in the charging case.

Note: If the charging case battery is low, automatic powering off is still available while automatic powering on is unavailable.

- Manual: Press and hold the power button on the transmitter and receiver for 2 seconds to turn them on or off.

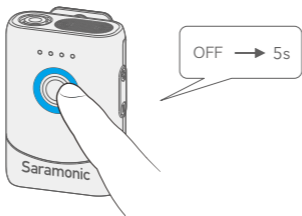


## Pairing

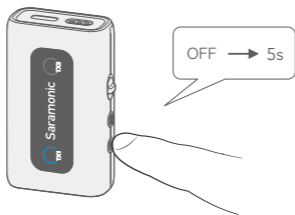
The receiver (RX) and transmitters (TX) in the Saramonic Mix package are pre-paired before delivery and will be connected automatically upon powering on. If the transmitter and receiver become unpaired, please follow the steps below to pair them. Before pairing, ensure the transmitters and receiver are powered off.

- 1\*TX + 1\*RX

1. With the transmitter powered off, a long press of its power button for 5 seconds will initiate its pairing with the receiver. During pairing, the transmitter's status indicator will blink blue quickly.



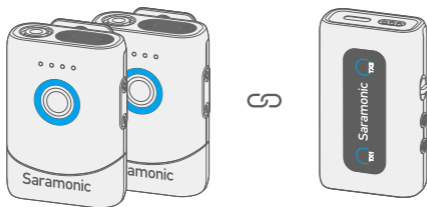
2. With the receiver powered off, a long press of its power button for 5 seconds will initiate its pairing with the transmitter. During pairing, the receiver's two indicators will blink blue quickly.



3. Once the transmitter and receiver are paired successfully, the status indicator on the transmitter and one of the receiver's indicators will turn solid blue, while the other indicator on the receiver will turn to blink blue, which will turn off after 10 minutes.

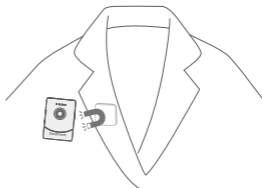
- 2\*TX + 1\*RX

If the receiver needs to be paired with two transmitters, press and hold the power button of each device for 5 seconds while powered off to enter pairing mode. During pairing, their indicators will blink blue quickly. After successful pairing, the indicator on both the transmitter and receiver will turn solid blue.

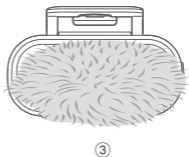
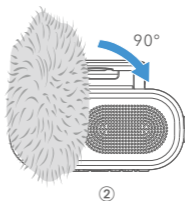
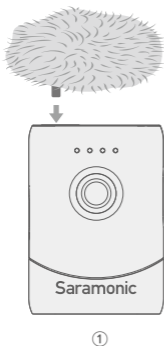


## Placing Transmitter

- The transmitter can be directly attached to clothing via its belt clip, or used with a magnet, offering users greater flexibility when wearing the transmitter.

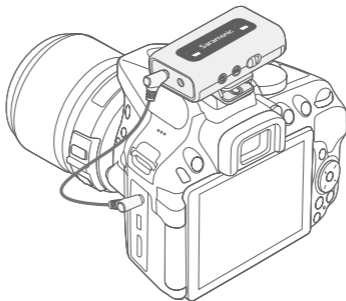
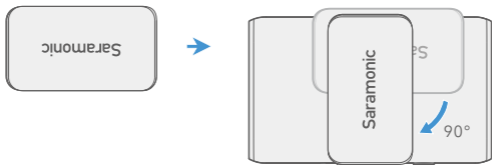


- The transmitter with a built-in microphone can be used with a fur windshield for capturing clear audio outdoors or in a windy environment. Attach the included fur windshield to the transmitter as shown in the figure below.



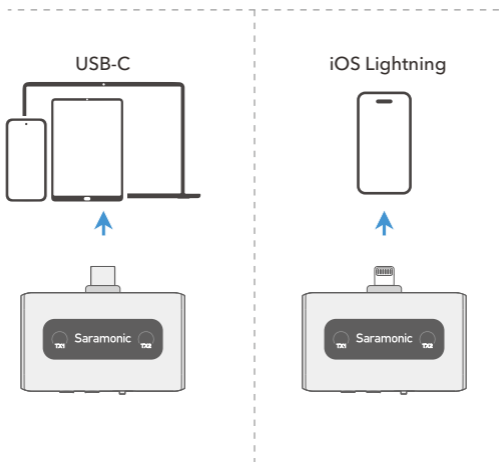
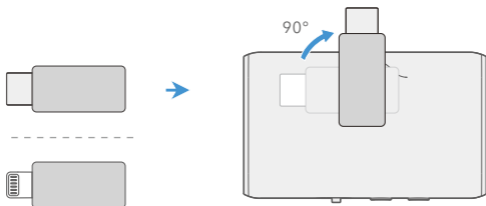
## Using with a Camera

Attach the receiver to a camera using the included receiver belt clip, then connect the receiver to the microphone input of the camera using the included camera cable. Then the audio will be transmitted to the camera.



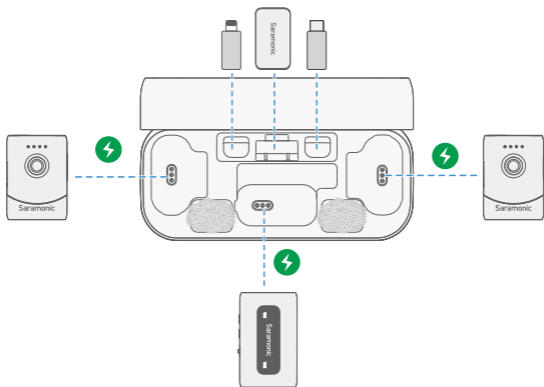
## Using with a Mobile Device

The receiver can be connected to a mobile device using the included mobile device adapter, then the audio captured by the transmitter will be transmitted to the mobile device.



## Storing

The charging case can store two transmitters with two magnets, two mobile device adapters, two fur windshields and a receiver with a receiver belt clip. The mobile device adapter can also be attached to the receiver and placed together.



## Charging

- **Charging with the charging case**  
Place the transmitters and receiver inside the charging case, and the case will charge them. Fully charging the transmitters and receiver takes about 1.5 hours. When the charging case is low on power or empty, it cannot charge the transmitters and receiver. It is recommended to use a 5V/2A charger (not included) to charge the case itself.
- **Charging with the charging cable**  
It is recommended to use a 5V / 1A charger (not included) to charge the transmitters and a 5V / 2A charger (not included) to charge the receiver.

## App Features

Scan the QR code to download the Saramonic app on your mobile device to use with the Saramonic Mix microphone system. This app provides additional features such as system settings, parameter configurations, and firmware upgrades.



When using the APP, please note the following:

1. The auto gain and limiter cannot be enabled simultaneously. Once auto gain is enabled, the volume levels on the transmitter cannot be manually adjusted.
2. The vocal boost and low cut cannot be enabled simultaneously.
3. When the safety track is enabled, the output mode defaults to mono. In this case, the M/S mode switching button on the receiver will be disabled. Turn off the safety track to use it normally.
4. Before upgrading, ensure that the transmitter and receiver are successfully paired. Once the upgrade starts, the two transmitters will upgrade sequentially. During the upgrade, the indicator will blink green slowly. After the upgrade is successful, the device will automatically restart. The entire process takes approximately 15 minutes, so please do not exit the APP to avoid upgrade failure.

## Troubleshooting

If you encounter problems when using the unit, please refer to the following checklist first. If the problem cannot be solved, please contact the dealer's after-sales service department.

- **Sound from the product is silent.**
  - ① Make sure the product is well-connected to your device and the cable is securely in place.
  - ② Make sure the mute function is NOT enabled on the transmitter.
- **Current noise or other abnormal noise appears during monitoring.**
  - ① Make sure there is no interference nearby. Try relocating the product.
  - ② Check if the volume is set too high. Try lowering the transmitter volume.
- **The operating range of the product is limited and the sound is frequently intermittent.**

Make sure there is no interference between the transmitter and receiver. Try relocating them.
- **The charging case fails to charge the product.**
  - ① Make sure the charging case's battery is not depleted. Try charging the case.
  - ② Wipe the charging contacts on the product and charging contacts in the case with a clean cloth to make sure there is no dirt covering them.
- **The product automatically turns off.**

After powering on, if the receiver and transmitter are not paired, they will automatically shut down after 10 minutes.

# Specifications

## Transmitter (Saramonic Mix TX)

Transmission Type	2.4 GHz digital frequency
Transmission Range	Up to 400 m (without obstacles)
Modulation	GFSK
Polar Pattern	Omnidirectional
Antenna	PIFA antenna
RF Output Power	< 13 dBm
Distortion	0.02 %
Frequency Response	20 Hz to 20 kHz
Sensitivity	-32 dB
Reference Audio Input Level	1.5 V
Sampling Rate	48 kHz
Bit Rate	24-bit
Signal-to-noise Ratio	≥90 dB
Max SPL	115 dB
Audio Input	6 mm condenser microphone
Power Supply	Built-in lithium-ion battery
Battery Capacity	380 mAh
Battery Life	Approx. 6 hours
Charging Time	Approx. 1.5 hours (5 V 1 A)
Weight	29 g
Dimensions	47 × 33.4 × 15.5 mm (L × W × H)
Operating Temperature	-10°C to 50°C
Storage Temperature	-20°C to 50°C



## Receiver (Saramonic Mix RX)

Transmission Type	2.4 GHz digital frequency
Transmission Range	Up to 400 m (without obstacles)
Modulation	GFSK
Polar Pattern	Omnidirectional
Antenna	FPC antenna + monopole antenna
RF Output Power	< 10 dBm
Distortion	0.03 %
Frequency Response	20 Hz to 20 kHz
Signal-to-noise Ratio	≥90 dB
Audio Output	Lightning / USB-C / 3.5 mm TRS output; 3.5 mm monitor port
Power Supply	Built-in lithium-ion battery
Battery Capacity	500 mAh
Battery Life	Approx. 6 hours
Charging Time	Approx. 1.5 hours (5 V 2 A)
Weight	31 g
Dimensions	58 × 35 × 17 mm (L × W × H)
Operating Temperature	-10°C to 50°C
Storage Temperature	-20°C to 50°C

## Charging Case (Saramonic Mix CC)

Battery Type	Lithium-ion battery
Battery Capacity	3500 mAh
Power Supply	USB-C port
Charging Time	Approx. 2.5 hours (5 V 2 A)
Charging Cycles	Approx. 1.5 times (2*transmitter and 1*receiver)
Weight	230 g
Dimensions	122 × 54 × 70 mm (L × W × H)
Operating Temperature	-10°C to 50°C
Storage Temperature	-20°C to 50°C

## 声明

请在使用前仔细阅读本手册，并严格按照说明进行操作和存储。请妥善保存好说明书以供将来参考。如果用户手册不能帮助您解决某些问题，请向零售商寻求帮助或给我们发送电子邮件：[support@saramonic.com](mailto:support@saramonic.com)

## 注意事项

1. 请勿擅自拆开机壳。
2. 请勿将本机靠近热源，如散热器、聚光灯或其他产生热量的设备。
3. 电池不可自行更换。
4. 请使用柔软的干布清洁本设备。
5. 在使用和储存时，请注意防尘和防潮。
6. 为获得最佳拾音效果，请勿将手放在麦克风咪头上。

## 概述

Saramonic Mix是一款 2.4 GHz 双通道无线麦克风系统，由发射器和接收器组成。发射器集成静音、降噪、自动连接等实用功能，配备独立的音量调节按键，可随时控制输入音量。发射器还能一键启动手机拍摄\*，使录制过程更轻松高效。接收器提供单声道和立体声两种输出模式，后期音频处理更加灵活。接收器支持边充边用，连接手机时可同时为手机和接收器充电。接收器还支持免拔插外放功能，连接手机时可直接播放音频。此外，通过接收器的监听孔，用户可实时监听音频质量，确保声音传达效果最佳。

Saramonic Mix支持USB-C、Lightning和3.5 mm TRS三种接口输出，兼容主流手机和各类相机。该系统采用先进的无线传输技术，确保音频信号稳定传输。无线传输距离可达400米，创作更随心所欲。无论是专业录音还是日常创作，Saramonic Mix都将成为不可或缺的音频伙伴。

\*适用支持音量键控制拍照的手机。

## 特点

支持外接领夹麦,录制更专业

- 自动跳频,超强抗干扰
- 7.0 ms超低延时
- 128-bit加密技术,传输更安全
- 自动增益&限幅器,平衡音量,防爆音
- 实时&回放,两种监听

## 包装清单

Saramonic Mix TX发射器 × 2

Saramonic Mix RX接收器 × 1

Saramonic Mix CC充电盒 × 1

手机转接头(USB-C) × 1

手机转接头(Lightning) × 1

接收器背夹 × 1

磁吸片 × 2

3.5 mm TRS转TRS相机转接线 × 1

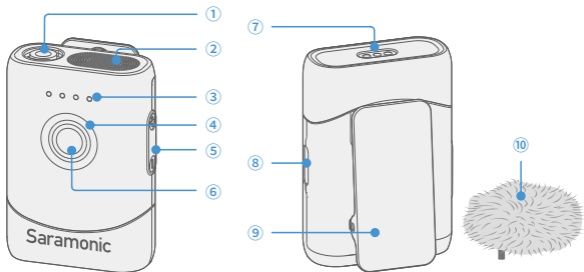
USB-C转USB-A充电线 × 1

防风毛套 × 2

收纳袋 × 1

# 产品结构

## 发射器 (Saramonic Mix TX)



- ① 防风毛套卡口 / 3.5 mm TRS 输入接口**  
可安装配套的防风毛套,有效减少风噪。此接口还可以搭配领夹麦(不含)使用。
- ② 内置麦克风**  
用于收音。
- ③ 音量指示灯**  
4颗音量指示灯对应1~4档音量,一个指示灯对应一档。短按+/-键,音量指示灯亮起白灯,显示目前的音量。

- ④ 状态指示灯**  
指示发射器的状态:

状态	指示灯
未连接接收器	蓝灯慢闪
已连接接收器	蓝灯常亮
单击发射器电源键开启手机拍摄	蓝灯快闪3次
双击发射器电源键开启静音	红灯慢闪
短按接收器NC键开启降噪功能	绿灯常亮
长按接收器NC键12秒恢复默认值	红灯慢闪5秒后发射器关机
低电量	红灯快闪
充电中	红灯常亮
开机状态充满电	恢复到原有工作状态时的亮灯方式
关机状态充满电	蓝灯常亮

注：开机状态下，发射器与接收器未连接，发射器10分钟后将自动关机。

### ⑤ + / -键

短按+ / -键，音量指示灯将亮起显示目前的音量；再次短按+ / -键即可调节麦克风的增益，且音量指示灯显示调整后的音量。音量可调节范围为1~4档。若音量仍然偏小，可通过APP调节RX的输出音量。

### ⑥ 电源键

- 长按电源键2秒将发射器开机或关机。
- 接收器连接手机后，手机处于视频拍摄界面时，单击发射器电源键可开启/关闭手机拍摄（适用于支持音量键控制拍照的手机）。
- 双击电源键可将发射器的麦克风静音或取消静音。

### ⑦ 充电触点

与充电盒触点连接后即可充电，当发射器充满电后，其指示灯呈蓝色常亮，并于60秒后自动熄灭。

### ⑧ USB-C数据接口

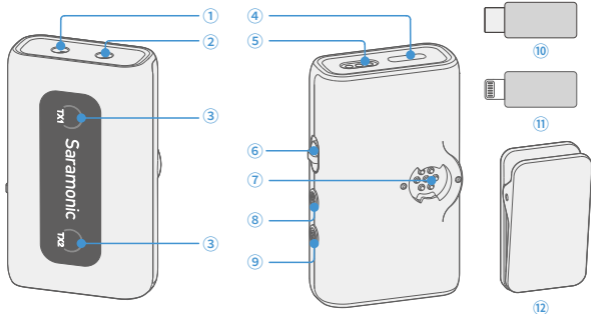
用于连接至电脑升级，也可通过此接口为发射器充电。

### ⑨ 背夹

直接夹于衣领上使用，或通过标配的磁吸片将发射器吸附在衣服上。

### ⑩ 防风毛套

## 接收器 (Saramonic Mix RX)



### ① 监听接口

可插入您的耳机，实现实时监听，确认发射器收音效果。

### ② Out 接口 (3.5 mm TRS输出接口)

可连接相机转接线，将发射器录制的音频输出至相机、混音器等设备。

### ③ TX1 & TX2指示灯

分别对应发射器1、发射器2的状态，同时也指示接收器本身的状态：

状态	TX1 & TX2指示灯
未连接发射器	蓝灯慢闪
已连接发射器	蓝灯常亮
双击发射器电源键开启静音	红灯慢闪
短按接收器NC键开启降噪功能	绿灯常亮
双击接收器电源键开启手机外放功能	蓝灯快闪3次
长按接收器NC键12秒恢复默认值	红灯慢闪5秒后接收器关机
低电量	红灯快闪
充电中	红灯常亮
开机状态充满电	恢复到原有工作状态时的亮灯方式
关机状态充满电	蓝灯常亮

注：开机状态下，接收器与发射器未连接，接收器10分钟后将自动关机。

### ④ USB-C 数据接口

用于连接至电脑升级，也可通过此接口为接收器充电。当接收器连接手机时，可通过此接口连接充电线，同时为手机和接收器充电。

### ⑤ 充电触点

与充电盒充电触点连接后，接收器开始充电。充满后，接收器TX1指示灯呈蓝灯常亮，并于60秒后自动熄灭。

### ⑥ M / S模式切换键

接收器支持两种输出模式：单声道和立体声。您可以通过M / S模式切换键切换输出模式，拨至M设置为单声道输出模式，拨至S设置为立体声输出模式。

注：当App开启安全音轨后，声道将默认设置为单声道模式输出。

### ⑦ 扩展接口

将手机转接头安装至扩展接口，即可将接收器连接至手机。或将接收器背夹安装至此接口，接收器即可通过此背夹安装至相机上。

### ⑧ NC键 (降噪键)

- 短按NC键开启或关闭降噪。共有强、弱两档降噪，出厂默认设置为强降噪，可在APP内切换；室内环境下建议使用弱降噪档位。
- 发射器和接收器连接成功后，长按NC键12秒，接收器指示灯红灯慢闪5秒后自动关机，设备即恢复默认设置。

注：恢复默认值仅会重置功能设置，不会影响配对。

### ⑨ 电源键

- 长按电源键2秒开机或关机。
- 双击电源键开启或关闭手机外放功能，此功能默认开启。当接收器连接至手机时，需要回放音频、外放声音时，无需拔下接收器，即可直接确认声音效果。

### ⑩ 手机转接头 (USB-C)

用于连接USB-C接口的手机。

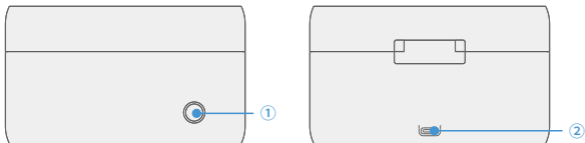
### ⑪ 手机转接头 (Lightning)

用于连接Lightning接口的手机。

### ⑫ 接收器背夹

可通过此背夹将接收器安装至相机上。

## 充电盒 (Saramonic Mix CC)



### ① 电量指示灯

- 充电盒接入电源充电时，该指示灯呈白灯慢闪，充满电后呈白灯常亮。
- 充电盒非充电状态时，打开充电盒或放入产品后，该指示灯显示充电盒当前电量，10秒后指示灯熄灭。

充电盒电量	指示灯
< 20%	红灯快闪
20%-50%	红灯常亮
50%-75%	橙灯常亮
75%-100%	白灯常亮

注：当电量指示灯呈红灯快闪时，充电盒处于低电量，请尽快为充电盒充电。

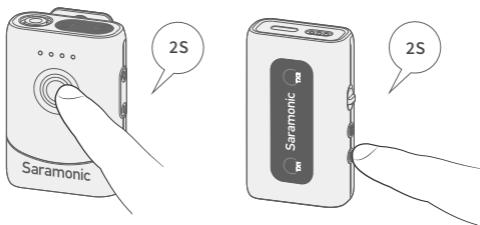
### ② USB-C充电口

连接充电线给充电盒自身充电。

# 操作指南

## 开机 / 关机

- 自动: 发射器和接收器从充电盒中取出, 将自动开机; 放入充电盒, 将自动关机。  
注: 充电盒低电情况下, 仍可触发自动关机, 但无法触发自动开机。
- 手动: 长按发射器电源键、接收器电源键2秒, 将发射器与接收器开机或关机。

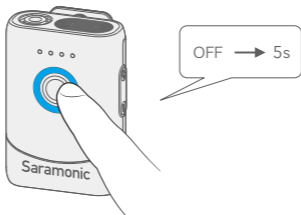


## 发射器与接收器配对

Saramonic Mix套装内的接收器(RX)和发射器(TX)出厂默认已配对, 开机后将自动连接。若发射器与接收器断开, 可按照以下操作配对。配对前, 请确保发射器和接收器均处于关机状态。

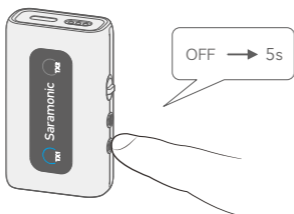
- 一拖一 (1 \*TX+1 \*RX)

1. 关机状态下, 长按发射器电源键5秒, 发射器将进入配对模式, 此时发射器的状态指示灯变为蓝灯快闪。





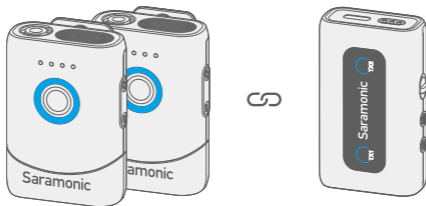
2.关机状态下, 长按接收器电源键5秒, 接收器将进入配对模式, 此时接收器的两颗指示灯均呈蓝灯快闪。



3.发射器与接收器配对成功后, 发射器的状态指示灯、接收器上的其中一颗指示灯呈蓝灯常亮, 另一个指示灯将转为蓝灯闪烁10分钟后熄灭。

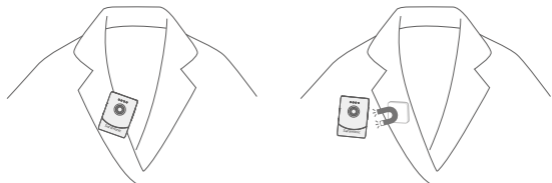
- 一拖二 (2 \*TX+1 \*RX)

若需将接收器与两个发射器配对, 可在关机状态下依次长按需配对的设备电源键5秒, 使其指示灯均呈蓝灯快闪进入配对模式。配对成功后, 发射器和接收器指示灯均呈蓝灯常亮。

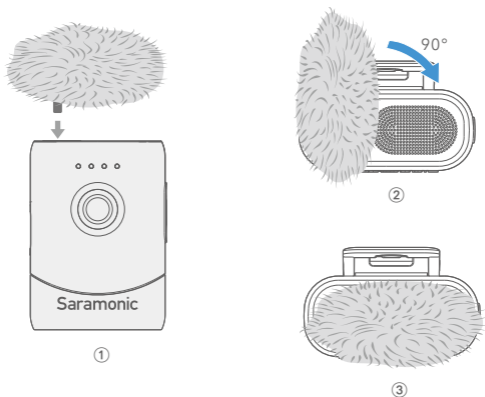


## 发射器佩戴方式

- 发射器可通过其背夹直接夹于衣领上使用，也可以通过标配的磁吸片将发射器吸附在衣服上。

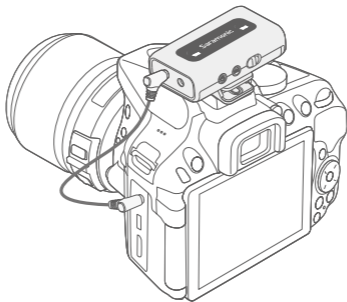
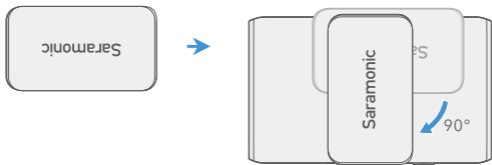


- 在户外或风大的环境中使用时，建议使用配备的防风毛套，可有效减少风噪。将防风毛套对准发射器上方的卡口插入，然后旋转固定。



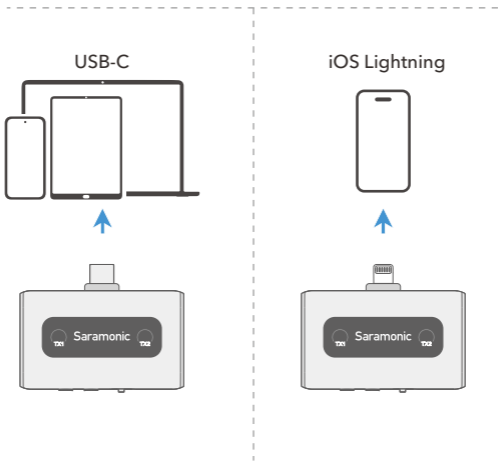
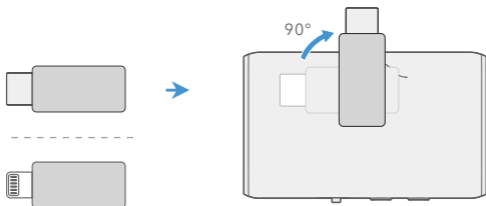
## 搭配相机使用

如下图所示，通过接收器背夹将接收器安装至相机，并使用相机转接线将接收器连接至相机麦克风输入接口，发射器即可传输音频至相机。



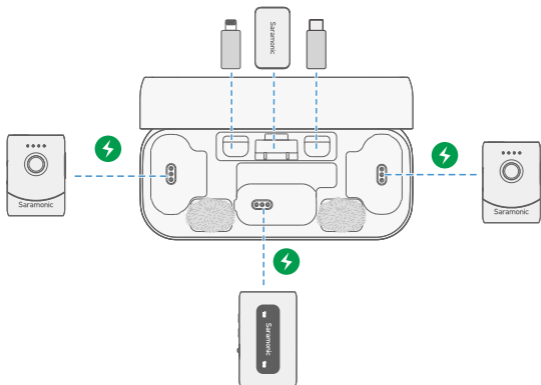
## 搭配手机使用

接收器可通过标配的手机转接头连接至手机, 使用手机拍摄音视频时, 发射器录制的音频即可传输至手机。



## 收纳

充电盒可收纳两个发射器、磁吸片、手机转接头及防风毛套，以及一个接收器和接收器背夹。也可将手机转接头或接收器背夹安装在接收器上一起放入充电盒。



## 充电

- 使用充电盒充电  
将发射器和接收器放入充电盒内，充电盒即可为发射器和接收器充电，充满需要约1.5小时。  
充电盒低电量和无电情况下无法给发射器和接收器充电，推荐使用5V/2A规格的充电器(不含)给充电盒自身充电。
- 使用充电线充电  
推荐使用5V/1A的充电器(不含)为发射器充电，使用5V/2A的充电器(不含)为接收器充电。

## App功能

您可以用手机扫描右方二维码下载 Saramonic App，与 Saramonic Mix 麦克风系统配合使用。Saramonic App提供更多的系统设置、参数配置和固件升级等功能。



使用App操作时,请注意以下事项:

1. 自动增益与限幅器功能无法同时开启;自动增益开启后,发射器上的音量档位无法手动调节。
2. 人声增强和低切功能无法同时开启;
3. 开启安全音轨功能,输出模式默认为单声道输出,此时接收器的M/S模式切换键将失效,需关闭安全音轨后,方可恢复正常使用;
4. 升级前,请确保发射器和接收器连接成功。升级开始后,两个发射器将依次进行升级,升级过程中指示灯绿灯慢闪。升级成功后,设备将自动重启。整个过程约15分钟,请勿退出APP以免升级失败。

## 故障排除

在使用本机的过程中出现任何问题,请参照以下内容加以解决。如果此手册仍然无法解决您遇到的问题,请与我们当地的经销商售后服务部联系。

- 产品无声音。

- ① 确保产品连接正常,连接线材无松动。
- ② 确保发射器未开启静音功能。

- 监听有不干净电流声、异常噪音等。

- ① 查看附近是否有干扰源,将产品更换使用位置再次确认。
- ② 验证音量是否调至过高,请调低发射器的音量后再尝试。

- 产品的使用距离受限且声音频繁断续。

查看发射器、接收器之间是否有干扰源,将产品更换使用位置再次确认。

- 充电盒无法给产品充电。

- ① 将充电盒进行充电,查看是否电量过低导致无法给产品充电。
- ② 用干净的布擦拭产品和充电盒的触点,避免由灰尘引起不接触不良。

- 产品自动关机。

开机状态下,接收器与发射器未连接,接收器与发射器将在10分钟后将自动关机。

## 参数

### 发射器 (Saramonic Mix TX)

传输方式	2.4 GHz数字频段
传输距离	400 m (无障碍)
信号调制	高斯频移键控
极性模式	全向型
天线类型	PIFA弹片天线
射频输出功率	<13 dBm
失真	0.02 %
频率响应	20 Hz至20 kHz
灵敏度	-32 dB
参考音频输入电平	1.5 V
采样率	48 kHz
位深度	24-bit
信噪比	≥ 90 dB
最大声压级	115 dB
音频输入	6 mm电容麦
供电方式	内置锂电池供电
电池容量	380 mAh
续航时长	约6小时
充电时长	约1.5小时 (5 V 1 A)
重量	29 g
尺寸	47 × 33.4 × 15.5 mm (L × W × H)
工作温度	-10°C 至 50°C
贮存温度	-20°C 至 50°C

## 接收器 (Saramonic Mix RX)

传输方式	2.4 GHz数字频段
传输距离	400 m (无障碍)
信号调制	高斯频移键控
极性模式	全向型
天线类型	FPC天线+单极弹片天线
失真	<10 dBm
频率响应	20 Hz至20 kHz
信噪比	≥ 90 dB
音频输出	Lightning / USB-C / 3.5 mm TRS输出; 3.5 mm 监听接口
供电方式	内置锂电池供电
电池容量	500 mAh
续航时长	约6小时
充电时长	约1.5小时 (5 V 2 A)
重量	31 g
尺寸	58 × 35 × 17 mm (L × W × H)
工作温度	-10°C 至 50°C
贮存温度	-20°C 至50°C

## 充电盒 (Saramonic Mix CC)

电池类型	锂电池
电池容量	3500 mAh
充电方式	USB-C接口
充电时长	约2.5小时 (5 V 2 A)
可供循环充电次数	1.5次左右 (2*发射器+1*接收器)
重量	230 g
尺寸	122 × 54 × 70 mm (L × W × H)
工作温度	-10°C 至 50°C
贮存温度	-20°C 至 50°C





For better recording experience, the application Saramonic is recommended.

为获得更好的录制体验, 推荐使用枫笛 Saramonic 自主研发应用软件 Saramonic。



Scan the QR code and follow us!  
扫描微信二维码关注枫笛公众号!

Shenzhen Jiayz Photo Industrial., Ltd  
深圳市长丰影像器材有限公司

A16 Building, Intelligent Terminal Industrial Park of Silicon Valley  
Power, Guanlan, Longhua District, Shenzhen, China  
深圳市龙华区观澜街道大富工业区硅谷动力智能终端产业园A16栋